

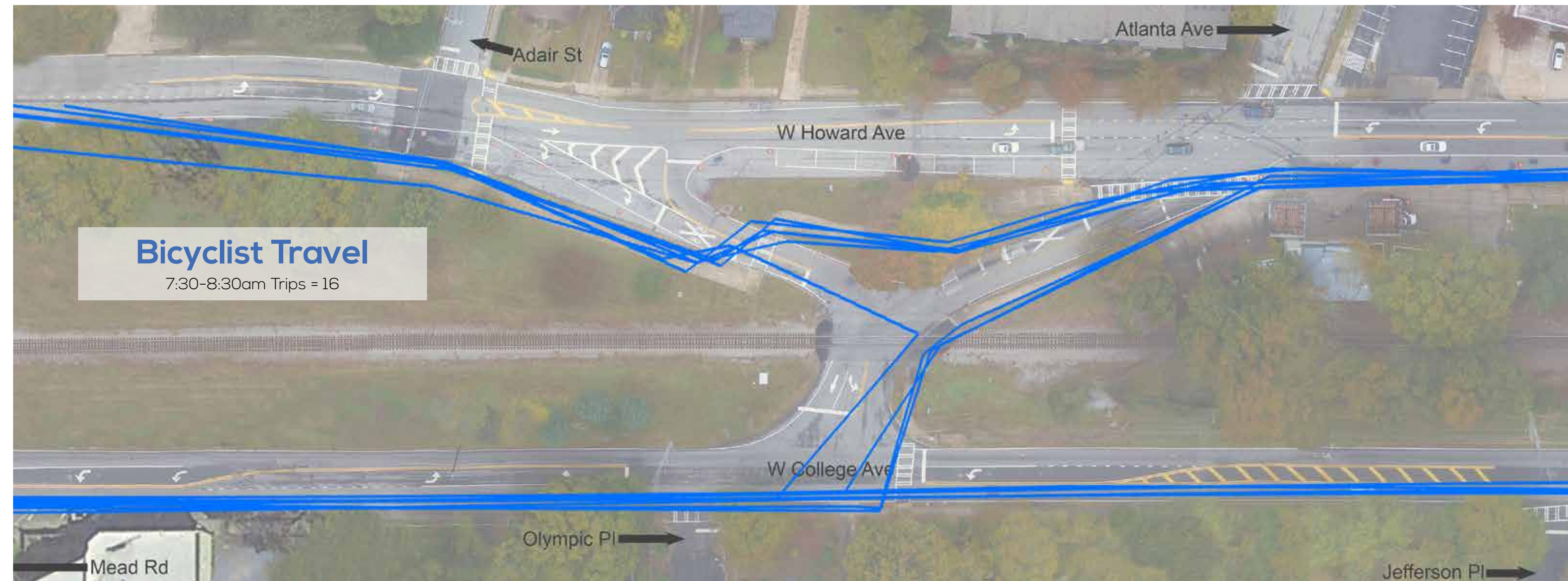
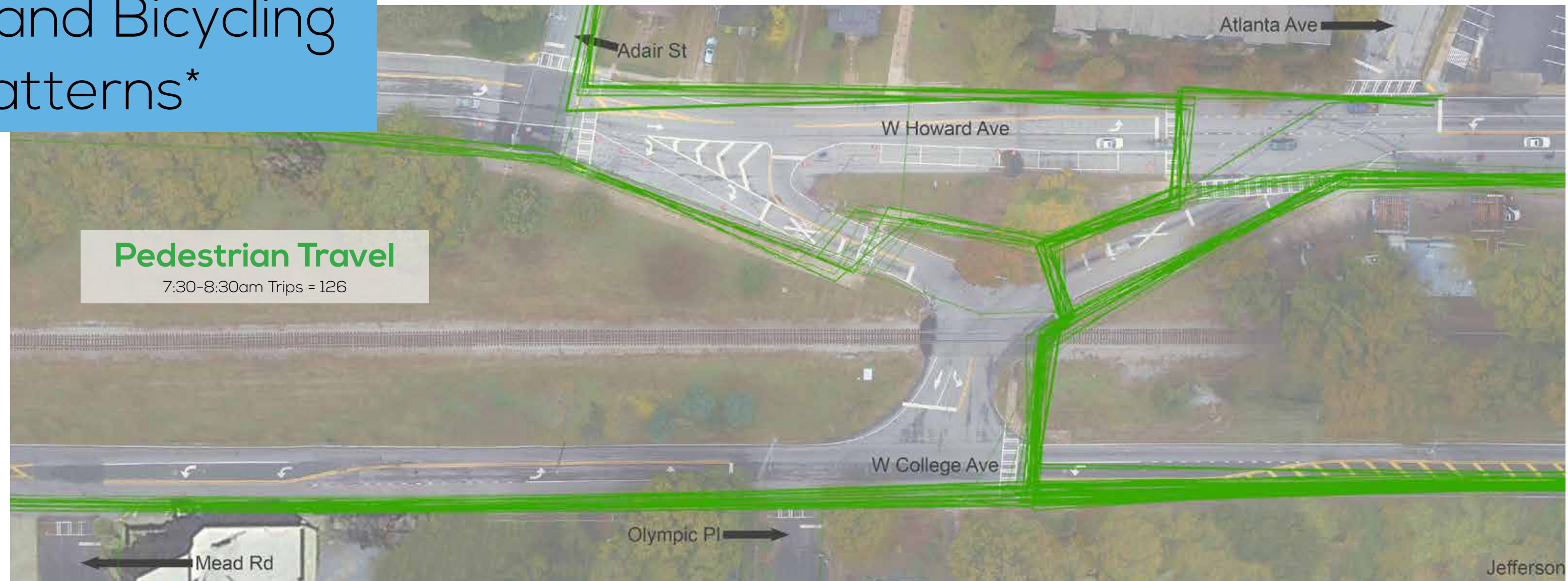
Motor Vehicle Traffic Distribution*

Morning		Destinations										
		West End of Howard Ave	North End of Adair St	NW Tip of Intersection @ Adair St	NE Tip of Intersection @ Atlanta Ave	North End of Atlanta AvE	East End of Howard Ave	West End of College Ave	South End of Mead Rd	South End of Olympic Pl	South End of Jefferson Pl	East End of College Ave
Origins	West End of Howard Ave		49	0	1	10	630	1	3	0	0	35
	North End of Adair St	92		0	0	1	6	3	5	0	0	16
	NW Tip of Intersection @ Adair St	0	0		0	0	0	0	0	0	0	0
	NE Tip of Intersection @ Atlanta Ave	0	0	0		0	0	0	0	0	0	0
	North End of Atlanta AvE	11	6	0	1		2	2	1	0	0	3
	East End of Howard Ave	522	26	1	3	10		30	15	0	0	41
	West End of College Ave	1	8	0	5	1	79		12	6	0	316
	South End of Mead Rd	4	7	0	3	3	28	34		2	0	34
	South End of Olympic Pl	2	4	0	1	0	8	18	0		0	7
	South End of Jefferson Pl	0	0	0	0	0	0	0	0	0		0
East End of College Ave	100	48	0	3	2	80	386	21	0	0		

Afternoon		Destinations										
		West End of Howard Ave	North End of Adair St	NW Tip of Intersection @ Adair St	NE Tip of Intersection @ Atlanta Ave	North End of Atlanta AvE	East End of Howard Ave	West End of College Ave	South End of Mead Rd	South End of Olympic Pl	South End of Jefferson Pl	East End of College Ave
Origins	West End of Howard Ave		55	0	2	11	349	2	0	0	0	52
	North End of Adair St	34		0	0	2	12	12	5	2	0	14
	NW Tip of Intersection @ Adair St	0	0		0	0	0	0	0	0	0	0
	NE Tip of Intersection @ Atlanta Ave	0	0	0		0	0	0	0	0	0	0
	North End of Atlanta AvE	6	2	0	0		7	5	3	0	0	4
	East End of Howard Ave	285	16	1	3	10		80	20	3	0	31
	West End of College Ave	3	8	0	0	2	60		18	6	0	245
	South End of Mead Rd	0	3	0	0	1	20	9		4	0	7
	South End of Olympic Pl	1	0	0	1	0	3	4	0		0	5
	South End of Jefferson Pl	0	0	0	0	0	0	0	0	0		0
East End of College Ave	30	11	0	1	6	32	251	9	3	0		

Walking and Bicycling Travel Patterns*

Morning



Afternoon

