

Goal 4.

Well Connected Multi- Modal Transportation Network

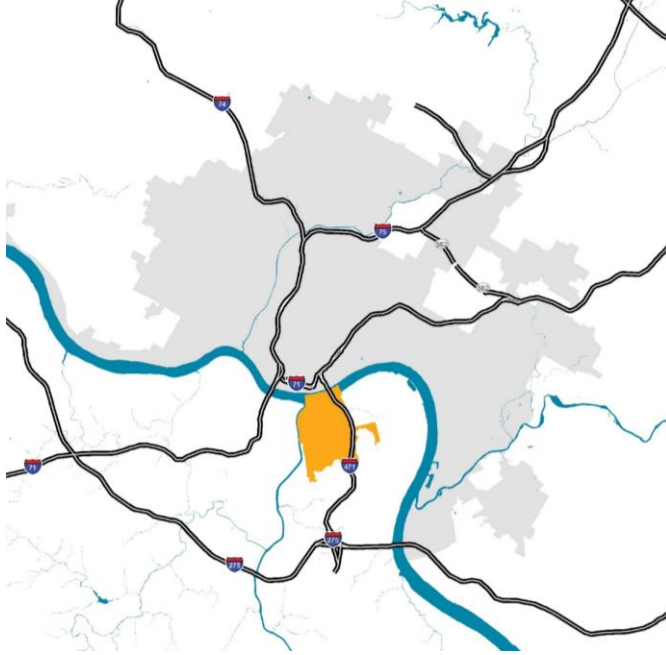
Goal 4: Well Connected Multi-Modal Transportation Network

Newport will have and maintain a well-connected and safe multi-modal transportation network that increases people's ability to reach destinations that can influence their health and well-being. Such a network is characterized by accessible and seamless bicycle and pedestrian infrastructure, direct routing for cars and trucks, and few physical barriers.



We will achieve a **Well Connected Multi-Modal Transportation Network** by focusing on these core **objectives**:

1. Improve and maintain infrastructure so residents of all ages can move easily throughout Newport, KY.
2. Increase connectivity within the City and throughout the region.
3. Design complete streets that serve multiple functions and modes for all ages and abilities.
4. Embrace smart technology.
5. Enhance parking management strategies.
6. Prepare for changes resulting from transportation advances (e.g. electric cars, scooters, etc.).



Newport is known for its location in the region and easy access to downtown Cincinnati. **Moving Forward**, we want to leverage our prime location and existing connections to improve transportation.

Assets

Location – *what people love most about Newport* *

- ❖ Greater Cincinnati Metro Area and access to regional highway network
- ❖ Easy access to downtown Cincinnati
- ❖ Regional bike/pedestrian linkage - Purple People Bridge

What do you **LOVE** most about Newport?*

(Select up to 3 Responses)

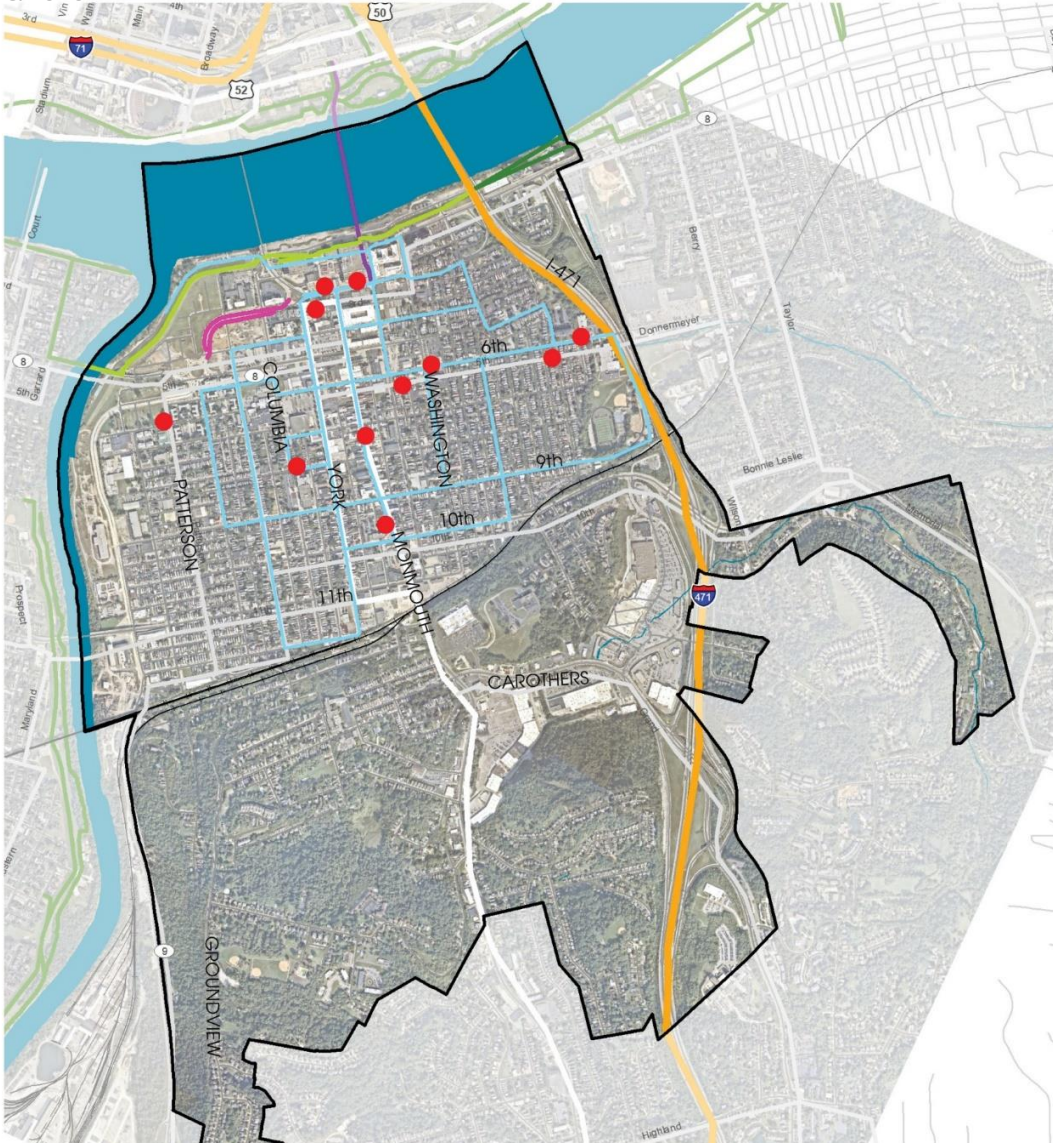
Location (Close to Cincinnati, next to two riverfronts, Interstate access) **71%**

Walkability **60%**

History (Newport stories, historic architecture, long-time businesses) **48%**

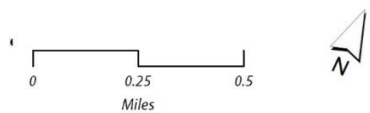
Local shops/restaurants **39%**

*More than 650 Newport residents, employees, business owners and visitors participated in the public survey, April 20 - May 17, 2020.



- Legend**
- City Boundary
 - GoVibrant Routes
 - Rivers & Streams
 - Regional Trails Plan
 - RedBikeStations
 - Interstate
 - Arterial
 - Major
 - Local
 - + Railroad

Source: Planning & Development Services of Kenton County; ReNewport, Red Bike



There are a number of **current conditions and trends** that influence how we plan for our future. Some of the key conditions related to public infrastructure are highlighted in the next slides.

Current Conditions

Newport’s roadway and sidewalk network is one of City’s most important infrastructure network. Indeed, the interconnected system of roads and bridges, as well as our other infrastructure systems (drinking water, sewers, dams and levees, solid waste, and energy) are all critical to our success.

We have become accustomed to these systems that quietly support our ability to work and play.

Local Roads and Bridges maintained by Newport

- ❖ Approximately 46 lane miles
- ❖ Systematic annual street maintenance

Other infrastructure maintained by the City

- ❖ Flood Protection
 - ❖ Constructed in 1951 – 2.39 Miles
 - ❖ 6 closure structures & 3 pump stations

*Interstate and Numbered Streets maintained by KYTC

Current Conditions

Our city has been around for **225** years!

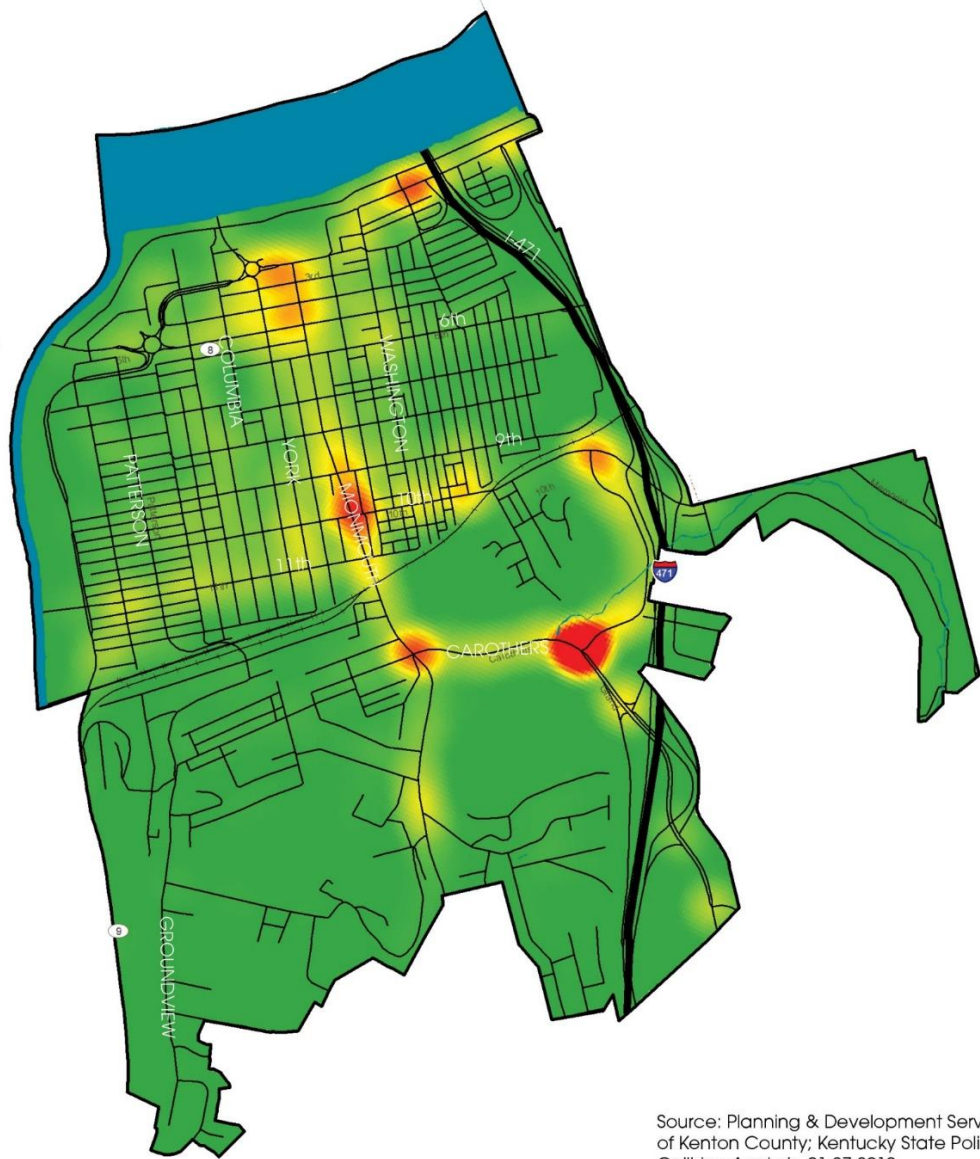
- ❖ Many of our roads and bridges (and other infrastructure systems) are aging and struggling to perform as necessary.
- ❖ The City is responsible for maintaining these critical public infrastructure elements.

Infrastructure Maintained by Others

- ❖ Wastewater & Stormwater Infrastructure:
 - ❖ Sanitation District No. 1
 - ❖ Combined Sewers – During wet weather, there are overflows into Licking and Ohio Rivers
- ❖ Drinking Water Infrastructure:
 - ❖ Northern Kentucky Water District
- ❖ Gas and Electric Infrastructure:
 - ❖ Duke Energy
- ❖ Transit:
 - ❖ TANK

Current Conditions

- ❖ Other regional agencies and public utilities own and maintain the remaining infrastructure networks.
- ❖ The city of Newport works closely with each of these entities.
- ❖ It is essential to plan for transportation improvements whenever public infrastructure improvements are undertaken.



Source: Planning & Development Services of Kenton County; Kentucky State Police Collision Analysis, 01.27.2019

Legend

- City Boundary
- Rivers & Streams
- Interstate
- Local Road
- 2015-2019 Collisions Value
- High : 7331.13
- Low : 0

0 0.25 0.5
Miles



Current Conditions

Roadway Safety Concerns*

3,814 crashes on Newport streets

3,430 (90%) Multiple vehicles crashes

3,076 (81%) Involved dry pavement conditions

2,766 (73%) Occurred during daylight

249 (7%) Injury crashes

4 Fatalities

*Crashes reported 2015 – 2019; does not include crashes on I-471 or within a parking lot.



Current Conditions

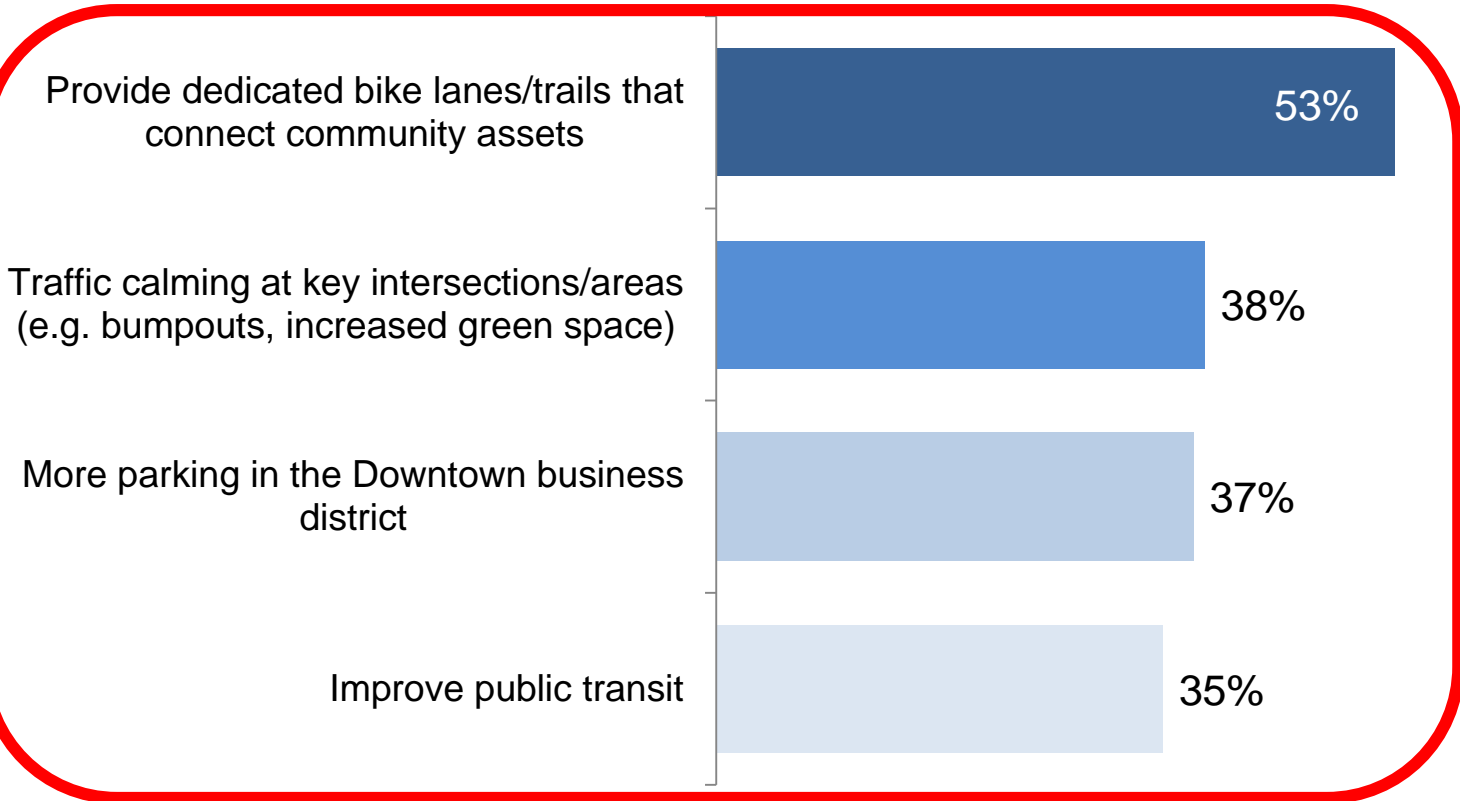
Pedestrian Safety Concerns*

- ❖ There were only about 7 crashes (0.9%) that involved pedestrians each year. An additional 3 crashes (0.4%) involved bicyclists.
- ❖ Pedestrian crashes constituted only about 1% of all crashes, though they were about 17% of the crashes that resulted in an injury.

*Crashes reported 2015 – 2019; does not include crashes on I-471 or within a parking lot.

Areas for Improvement

Most important considerations for FUTURE TRANSPORTATION

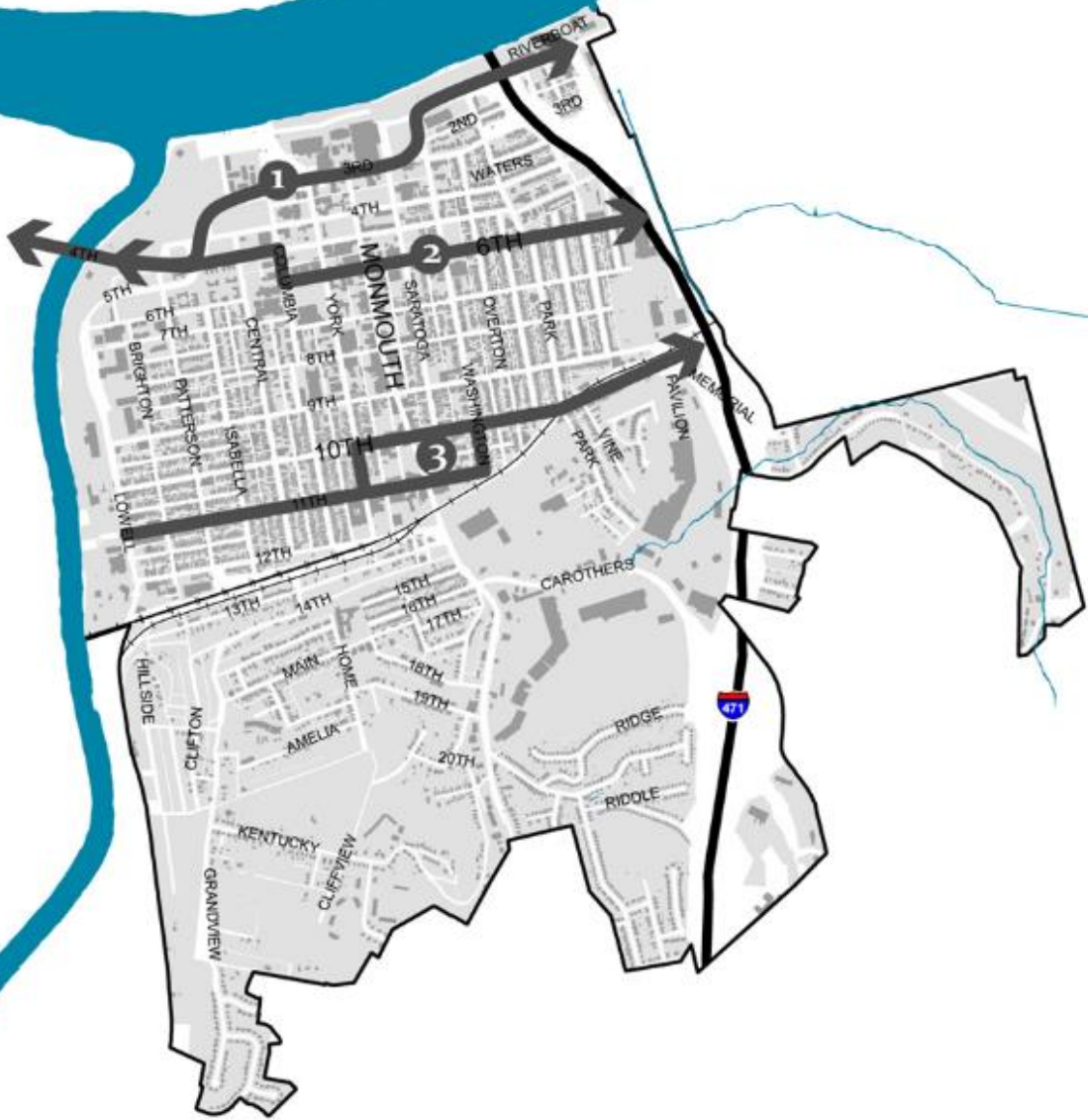


A number of Newport residents, employees, business owners and visitors participated in the first public survey.

The findings show that the top priority for future transportation improvements is **providing infrastructure to make it easier to bike around Newport.**

This valuable input will help inform the Comprehensive Plan process.

*More than 650 Newport residents, employees, business owners and visitors participated in the public survey, April 20 through May 17, 2020.

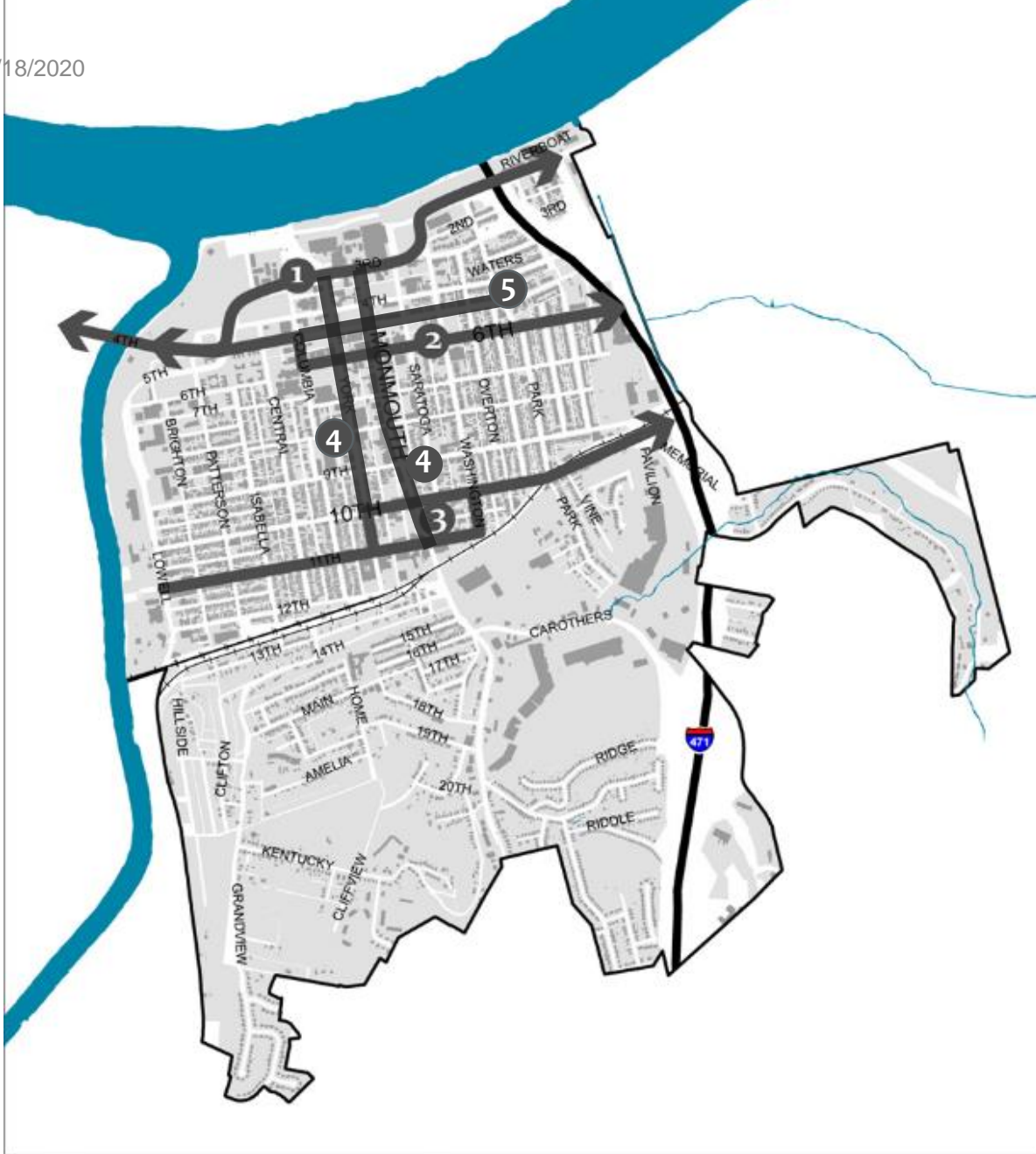


Based on input the Steering Committee has received so far, the following **Placed-based Focus** areas related to **Connectivity and Transportation** were developed.

Key Focus Areas

- ❖ East/West Connectors
 - ① Dave Cowens Dr
 - ② 5th/6th Streets
 - ③ 10th/11th Streets

① Dave Cowens Dr ② 5th / 6th
③ 10th / 11th



1 Dave Cowens Dr

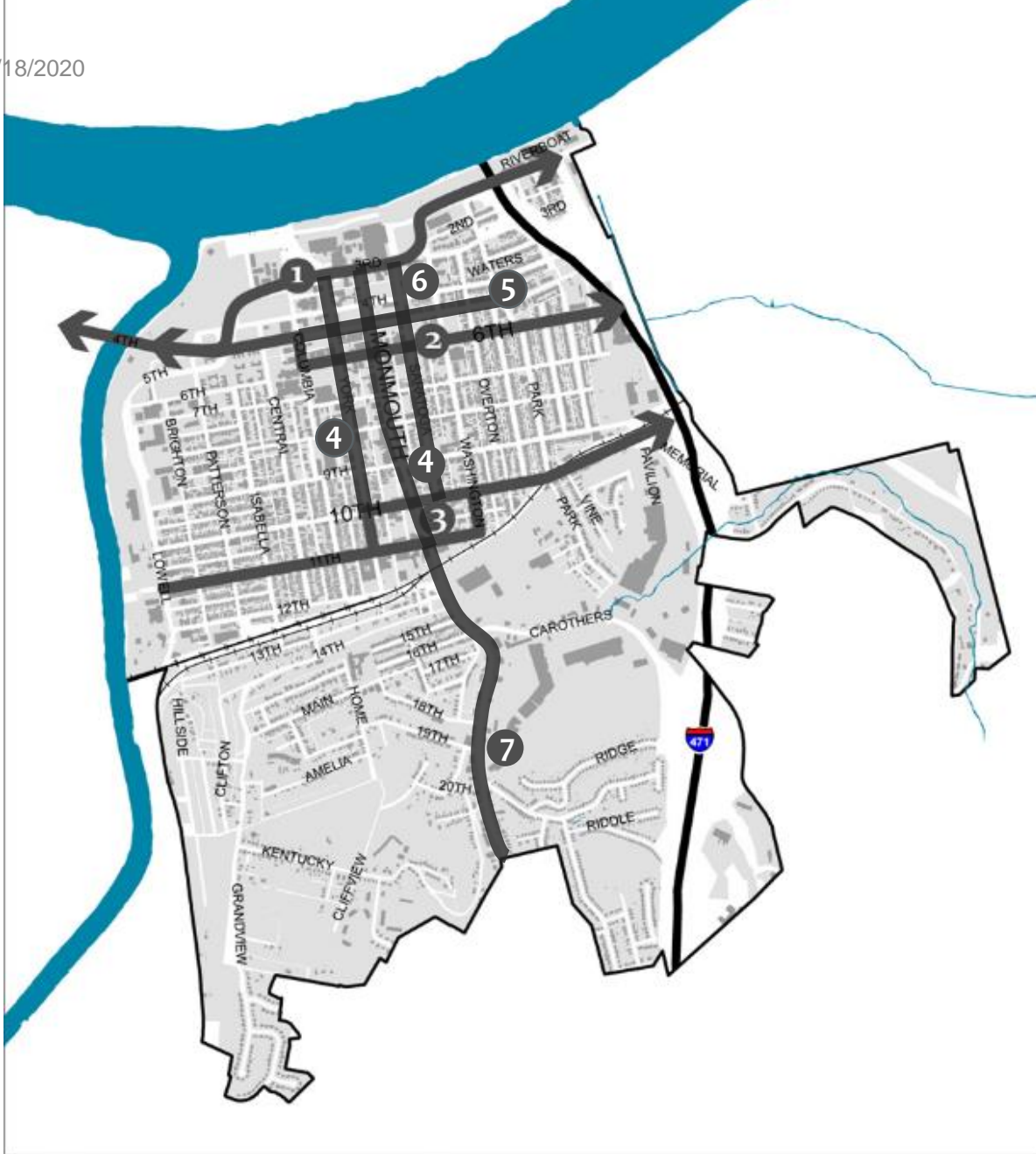
2 5th / 6th

3 10th / 11th

Key Focus Areas

❖ Two-Way Street Conversions

- 4 Monmouth Avenue & York Avenue
- 5 5th Street



- 1 Dave Cowens Dr
- 2 5th / 6th
- 3 10th / 11th
- 4 Monmouth & York
- 5 5th St

Key Focus Areas

- ❖ Alternative Transportation Corridors
 - 6 Create a bike boulevard on Saratoga Avenue
- ❖ Smart Corridor
 - 7 US 27

We want to hear from **YOU!**

- What do you think should be Newport's primary transportation related focus over the next few years?
- What can Newport improve to achieve a safe and connected network of roads, sidewalks, bikeways, and trails?
- Did we miss anything?